



Fleet Farm High Street, Girton, Newark,  
Nottinghamshire, NG23 7JA

£395,000

Tel: 01636 611 811

 **RICHARD  
WATKINSON**  
PARTNERS  
Surveyors, Estate Agents, Valuers, Auctioneers



A sympathetically restored and extended period farmhouse set on a 0.8 acre plot with productive garden and paddock land, in this peaceful rural location. The property offers flexible living accommodation with a separate self-contained annexe and additionally there are a range of beautiful outbuildings which could be used for a variety of purposes and currently used for a pottery business. The living accommodation has the benefit of a liquid propane gas central heating system which had a new boiler fitted in 2023.

The accommodation comprises entrance porch, open plan kitchen, dining room, study, garden room extension built in 2020 with French doors opening to the garden, boot room/utility room, rear hallway with staircase rising to the first floor where there is a landing, three family sized bedrooms and a bathroom which has been modernised with a white suite. From the utility/boot room a door connects to the charming, self contained annexe which has a kitchen, shower room and bed/sitting room. This would be ideal for growing children, guests, expanded family or potentially a small holiday let.

Outside the property is situated on a secluded plot extending to 0.8 acre or thereabouts, approached by a driveway providing hardstanding and ample parking for several vehicles. The grass paddock land extends along the eastern side and there are a range of substantial outbuildings. The enclosed gardens are located on the west side and are laid out with lawned areas, box hedging, a brick paved patio terrace. Also there are productive veg plots and fruit trees. The garden and paddock land is a most tranquil and secluded environment.

Girton is a small village with access to the river Trent and beautiful surrounding countryside. The nearby village of Collingham (3 miles) has a range of amenities including a modern Co-op store, butchers, newsagents, hairdressers, fish and chip shop, community run village pub, medical centre with doctor's surgery and a primary school. Secondary schooling can be found at Newark and Tuxford which has the Tuxford Academy rated good by Ofsted.

The plot is constructed of brick elevations under a tiled

roof covering with living accommodation arranged over two levels. The accommodation can be described in more detail as follows:

### GROUND FLOOR

#### ENTRANCE PORCH

Wooden front entrance door with leaded light.

#### LOUNGE/GARDEN ROOM EXTENSION

13'9 x 13'7 (4.19m x 4.14m)



Built in 2020, this garden room extension makes a lovely family living room with vaulted ceiling, outlook onto the garden with four double glazed windows and two sets of double glazed French doors, two Velux roof lights, laminate flooring. Underfloor central heating, multi-fuel stove, centre opening sliding oak framed glazed doors leading to the kitchen.

### DINING ROOM

11'8 x 10'10 (3.56m x 3.30m)



Leaded light window to front elevation, oak framed glazed centre opening sliding doors leading to the kitchen. Reclaimed period slate fireplace housing a Valor multi-fuel stove. Squared opening to:



## KITCHEN

12'5 x 11'10 (3.78m x 3.61m)



(plus 8'3 x 9'9)



Refitted in 2020 with a range of modern kitchen units comprising Shaker design cupboards and drawers, wood block working surfaces over, inset ceramic one and a half bowl sink and drainer, tiling to splashbacks, wall mounted cupboards, island unit with wood block working surfaces and breakfast bar over. Inset electric hob, electric double oven, original built in floor to ceiling cupboard housing the LPG fired Ideal combination boiler which was fitted new in 2023. Attractive slate floor tiles, fireplace recess with

herringbone design tiling, wood panelling and a slate hearth. Radiator, leaded light double glazed window to the front and wooden front entrance door with leaded light.



## BOOT/UTILITY ROOM

12'1 x 5'11 (3.68m x 1.80m)

Plumbing for automatic washing machine, ceramic tiled floor covering, Butler's style sink, working surface, stable door to rear garden, part glazed wooden door with stained glass to the front, two side windows, door to annexe.

## STUDY

10'10 x 8'4 (3.30m x 2.54m)

French doors to the rear elevation, oak flooring and radiator.

## REAR HALLWAY

With staircase leading to first floor.

## FIRST FLOOR

## LANDING

## BEDROOM ONE

13'10 x 11'8 (4.22m x 3.56m)



With attractive period cast iron fireplace, wood framed double glazed leaded light window to front elevation, double panelled radiator.

## BEDROOM TWO

10'10 x 11'8 (3.30m x 3.56m)



With wood framed double glazed leaded light window to front elevation, cast iron period fireplace, radiator.



### BEDROOM THREE

9'1 x 8'5 (2.77m x 2.57m)



With uPVC double glazed window to side elevation and radiator.

### FAMILY BATHROOM

8'3 x 8' (2.51m x 2.44m)



Fitted with a modern white suite comprising panelled bath, electric Triton shower over, shower screen, tiling to splashbacks, low suite WC, wash hand basin with vanity cupboard, uPVC double glazed window to rear elevation, towel radiator, ceramic tiled floor.

### ANNEXE



### KITCHEN

10'7 x 4'8 (3.23m x 1.42m)  
(plus 6'1 x 6')



Vaulted ceiling with Velux roof light, radiator, double glazed window to the front, ceramic tiled floor covering. Kitchen units comprise base units with cupboards and drawers with working surfaces over, stainless steel wash hand basin and mixer tap, built in electric oven, plumbing for dishwasher. Wall mounted cupboards.



### BED/SITTING ROOM

13'5 x 10'8 (4.09m x 3.25m)



With wooden double glazed front entrance door and window, vaulted ceiling with Velux roof light, laminate floor covering, radiator.

### SHOWER ROOM

5'9 x 4'6 (1.75m x 1.37m)

With fully tiled walls, ceramic tiled floor and drain, wall mounted Triton electric shower, white suite with wash



hand basin and low suite WC. Extractor fan and halogen downlight.

## OUTSIDE



The property is set on a plot of 0.8 acres or thereabouts with garden area, paddock land and a range of outbuildings. The enclosed rear gardens are west facing and laid out with a brick paved patio terrace, lawned areas with box hedging, productive vegetable plots and fruit trees. There are wooden close boarded fences to the boundaries which give a good degree of privacy. The greenhouses are located to the rear of the house.



To the front of the property wooden gates give access to a recently constructed gravelled driveway proving ample off-road parking for several vehicles. There is a rendered wall with metal railing and box hedging to the front of the house enclosing a garden area. the wall extends along the front of the annexe and encloses a pleasant terrace area. The paddock land extends along the east side of the property to the boundary and Mill dyke. There is a pleasant outlook onto the neighbouring countryside, The paddock land consists of grassed areas and is planted with a variety of trees creating a secluded and tranquil Spinney area.



## OUTBUILDINGS

## THE BARN



Timber built on a concrete base, and divided into three rooms;



### ROOM ONE

14'6 x 11'6 (4.42m x 3.51m)

This room houses the pottery kiln.

### ROOM TWO

18'3 x 14'4 (5.56m x 4.37m)

With entrance door, windows to front and rear, wood burning stove.

### ROOM THREE

19'4 x 14'3 (5.89m x 4.34m)

Used as a store or garage with two up and over entrance doors.

### THE POTTERY

A brick and block built outbuilding which is currently used to house a successful pottery business but could be utilised for a number of purposes. There are three rooms with power and light connected.

### ROOM ONE

10'9 x 8'4 (3.28m x 2.54m)

This block built part of the building has a Quarry tiled floor.

### ROOM TWO

24'4 x 10'7 (7.42m x 3.23m)

Power and light connected, brick floor. This part of the building has been re-roofed and insulated. There are two windows.

### ROOM THREE

15' x 11'3 (4.57m x 3.43m)

With Quarry tiled floor and a stable style entrance door.

Additional outbuildings include a large timber built storage shed.

### TENURE

The property is freehold.

### SERVICES

Mains water, electricity and drainage are connected to the property. There is no mains gas available in Girton. The central heating is fired by liquid Propane gas (Calor gas).

### VIEWING

Strictly by appointment with the selling agents.

### POSSESSION

Vacant possession will be given on completion.

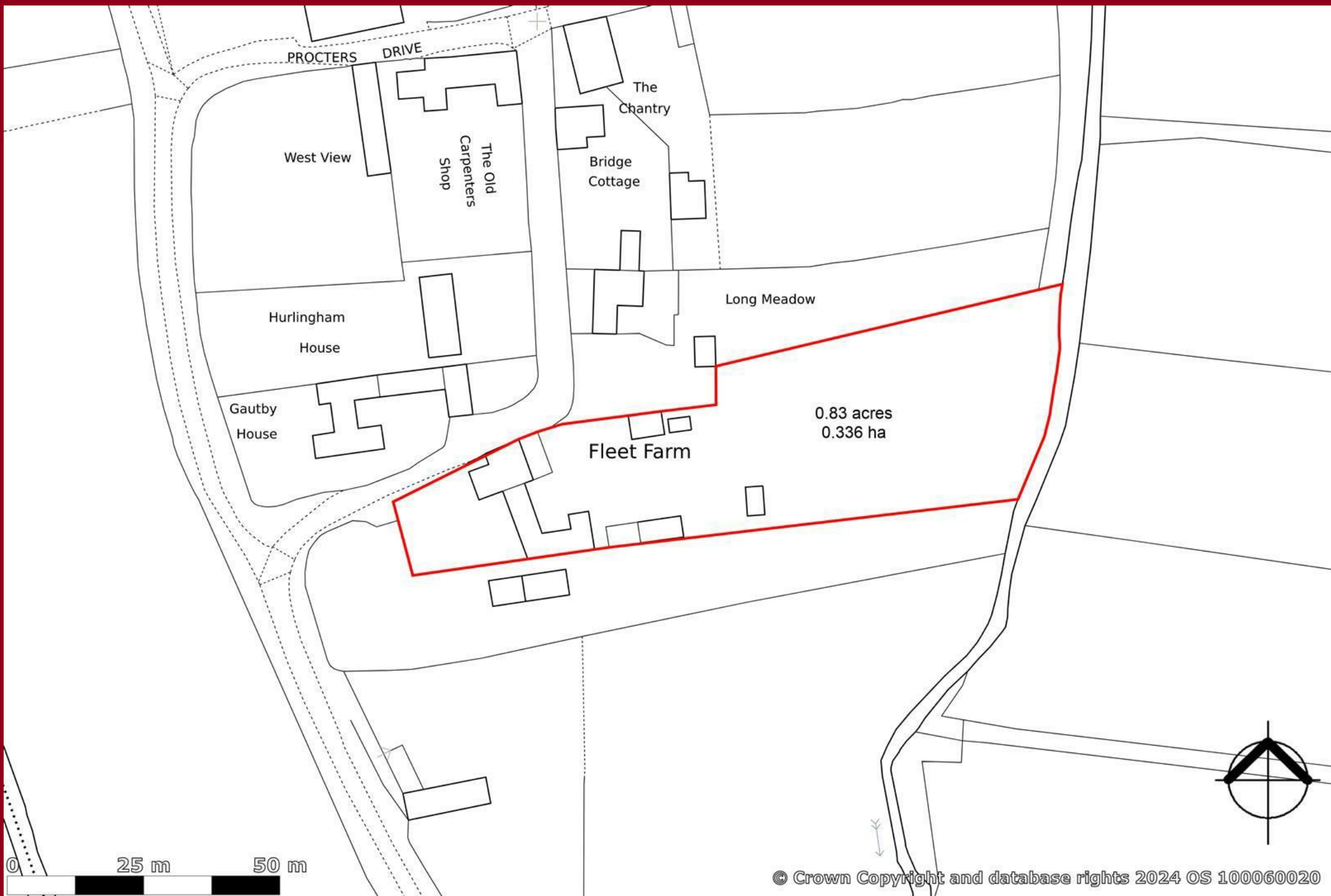
### MORTGAGE

Mortgage advice is available through our Mortgage Adviser. Your home is at risk if you do not keep up repayments on a mortgage or other loan secured on it.

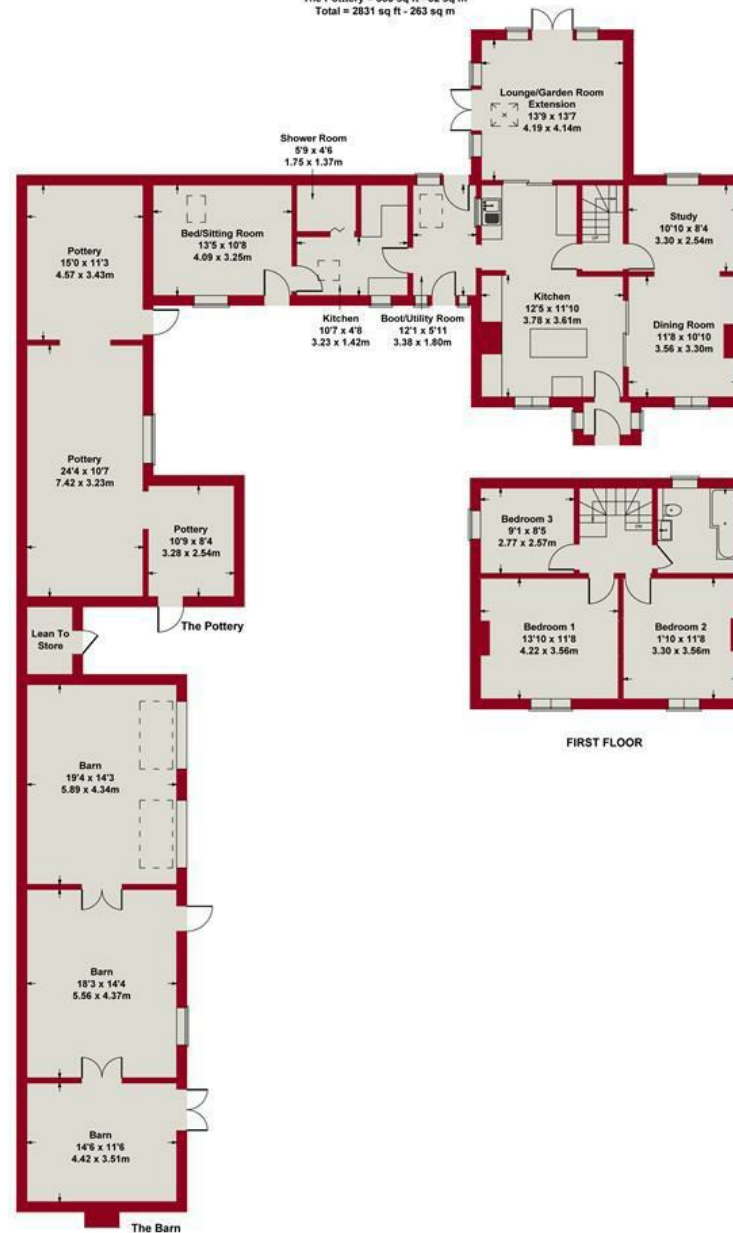
### COUNCIL TAX

The property comes under Newark and Sherwood District Council Tax Band C.





Approximate Gross Internal Area  
 Main House = 1216 sq ft - 113 sq m  
 The Barn = 732 sq ft - 68 sq m  
 The Pottery = 883 sq ft - 82 sq m  
 Total = 2831 sq ft - 263 sq m



GROUND FLOOR

SKETCH PLAN FOR ILLUSTRATIVE PURPOSES ONLY

All measurements walls, doors, windows, fittings and appliances,  
 their sizes and locations, are approximate only.  
 They cannot be regarded as being a representation by the seller, nor their agent.

Produced by Potterplans Ltd. 2024







Energy Efficiency Rating		
	Current	Potential
Very energy efficient - lower running costs		
(92 plus) A		
(81-91) B		
(69-80) C		
(55-68) D		
(39-54) E		
(21-38) F	30	39
(1-20) G		
Not energy efficient - higher running costs		
England & Wales		EU Directive 2002/91/EC



*These particulars, whilst believed to be accurate are set out as a general outline only for guidance and do not constitute any part of an offer or contract. Intending purchasers should not rely on them as statements of representation of fact, but must satisfy themselves by inspection or otherwise as to their accuracy. No person in this firm's employment has the authority to make or give any representation or warranty in respect of the property. Any fixtures and fittings not mentioned in these details are excluded from the sale price. No services or appliances which may have been included in these details have been tested by the selling agent and therefore cannot be guaranteed to be in good working order.*

*As part of the service we offer we may recommend ancillary services to you such as mortgage advice, solicitors and surveyors which we believe will help with your property transaction. We wish to make you aware that should you decide to proceed we may receive a referral fee or equivalent. This could be a fee, commission, payment or other reward. We will not refer your details unless you have provided consent for us to do so. You are not under any obligation to provide us with your consent or to use any of these services. You are also free to choose an alternative provider.*

Thinking of selling? For a FREE no obligation quotation call 01636 611 811



**RICS**



Richard Watkinson & Partners is the trading name of Richard Watkinson Ltd.  
Registered in England. Ltd Registration number: 07140024

25 Stodman Street,  
Newark NG24 1AT  
Tel: 01636 611 811  
Email: [newark@richardwatkinson.co.uk](mailto:newark@richardwatkinson.co.uk)

**RICHARD  
WATKINSON  
PARTNERS**

Surveyors, Estate Agents, Valuers, Auctioneers